



## NATIONAL *IN SITU* LANDRACE INVENTORY

# Database for Landrace information recording Manual

The aim of the manual is to provide specific indications on how to use the PGR Secure database





## NATIONAL *IN SITU* LANDRACE INVENTORY

- ☐ use the tool to add an unlimited number of accessions
- ☐ the tool has been developed and tested for MS Access version 2003/2007/2010. For previous versions it may not work





## NATIONAL *IN SITU* LANDRACE INVENTORY

- ☐ click on ENTER THE DATABASE to enter, if the database is not active, it is necessary to activate the macro VBA protection alert (see figures shown below at pages 6-8)
- ☐ click ADD to add a new record (accession) to the database
- ☐ click DELETE to delete a current record from the database





## NATIONAL *IN SITU* LANDRACE INVENTORY

- ☐ click BACK and/or NEXT to return to a previous record or to go to the next record
- ☐ click FIND to find key words in specific fields
- ☐ in the fields "data" which allow for multiple choice, a box shows the codes you have selected





## NATIONAL *IN SITU* LANDRACE INVENTORY

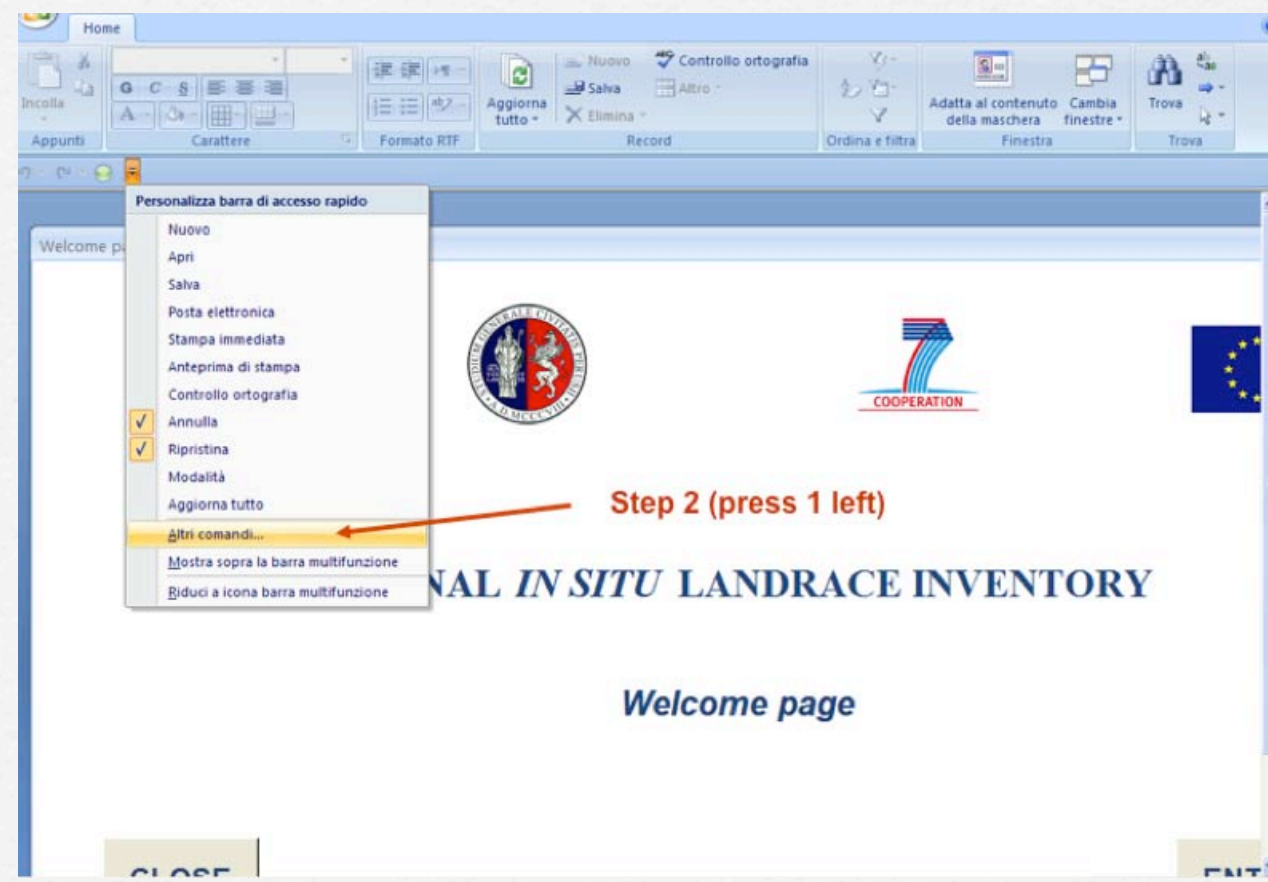
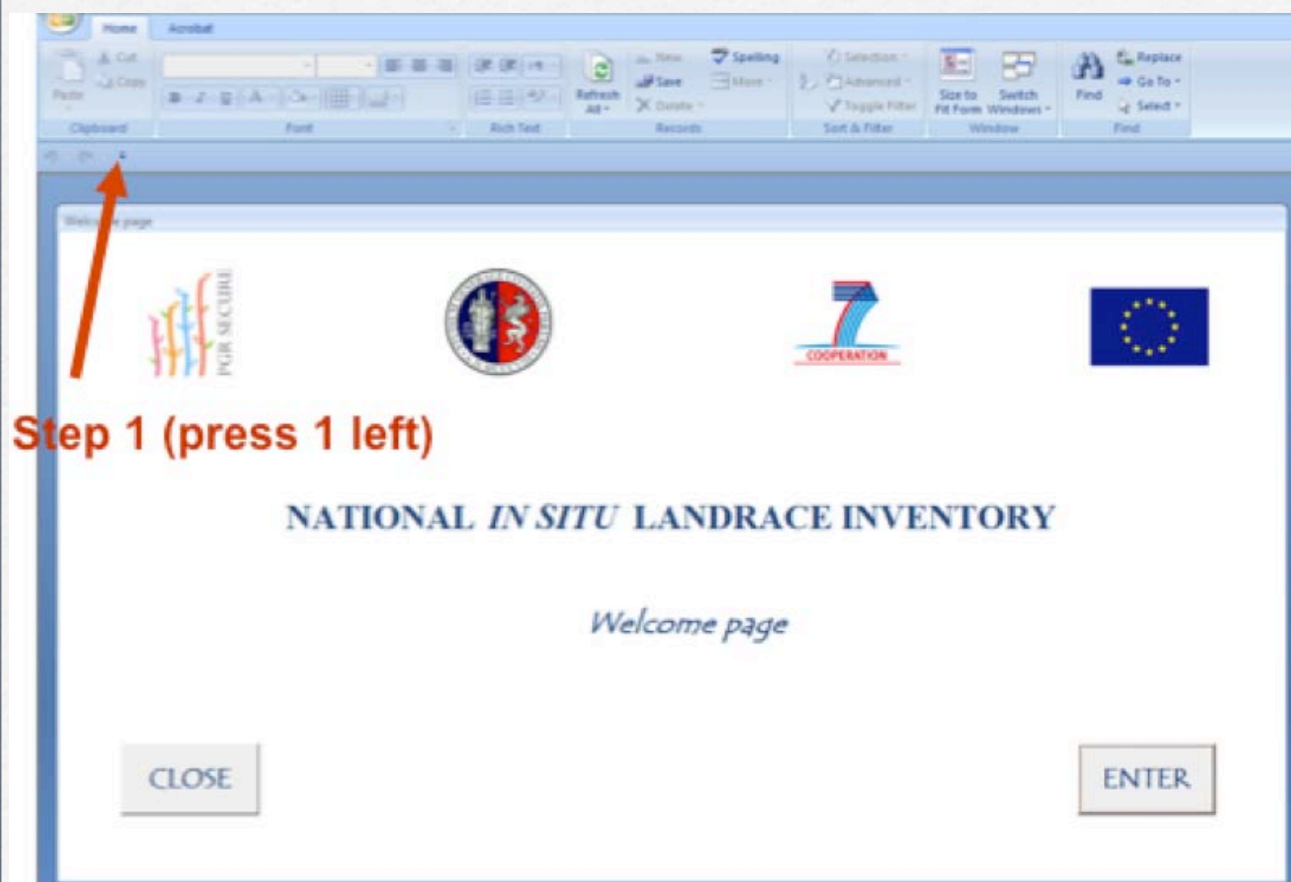
- ☐ click EXIT to exit correctly from the database
- ☐ data are saved automatically, but all data can be modified/integrated by using the BACK key





## NATIONAL *IN SITU* LANDRACE INVENTORY

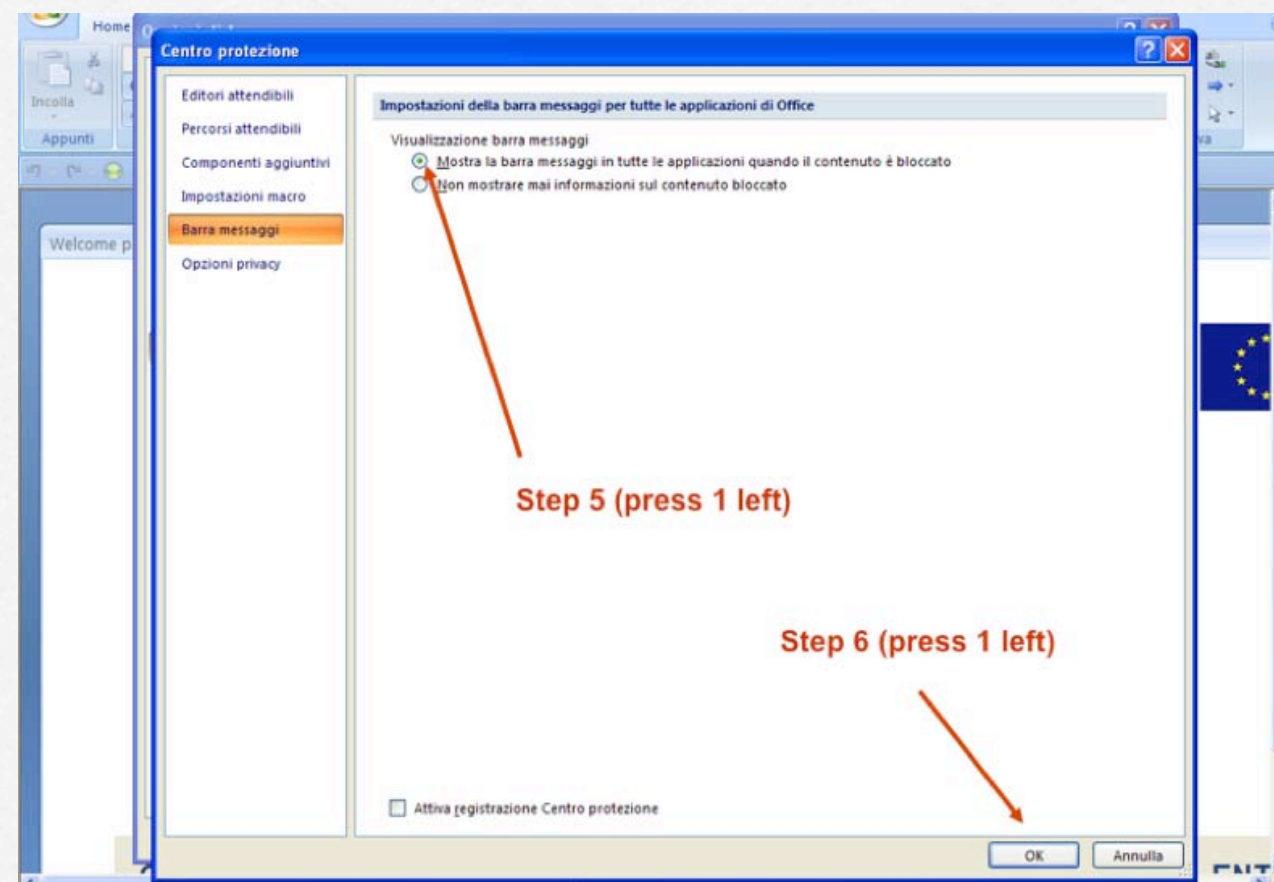
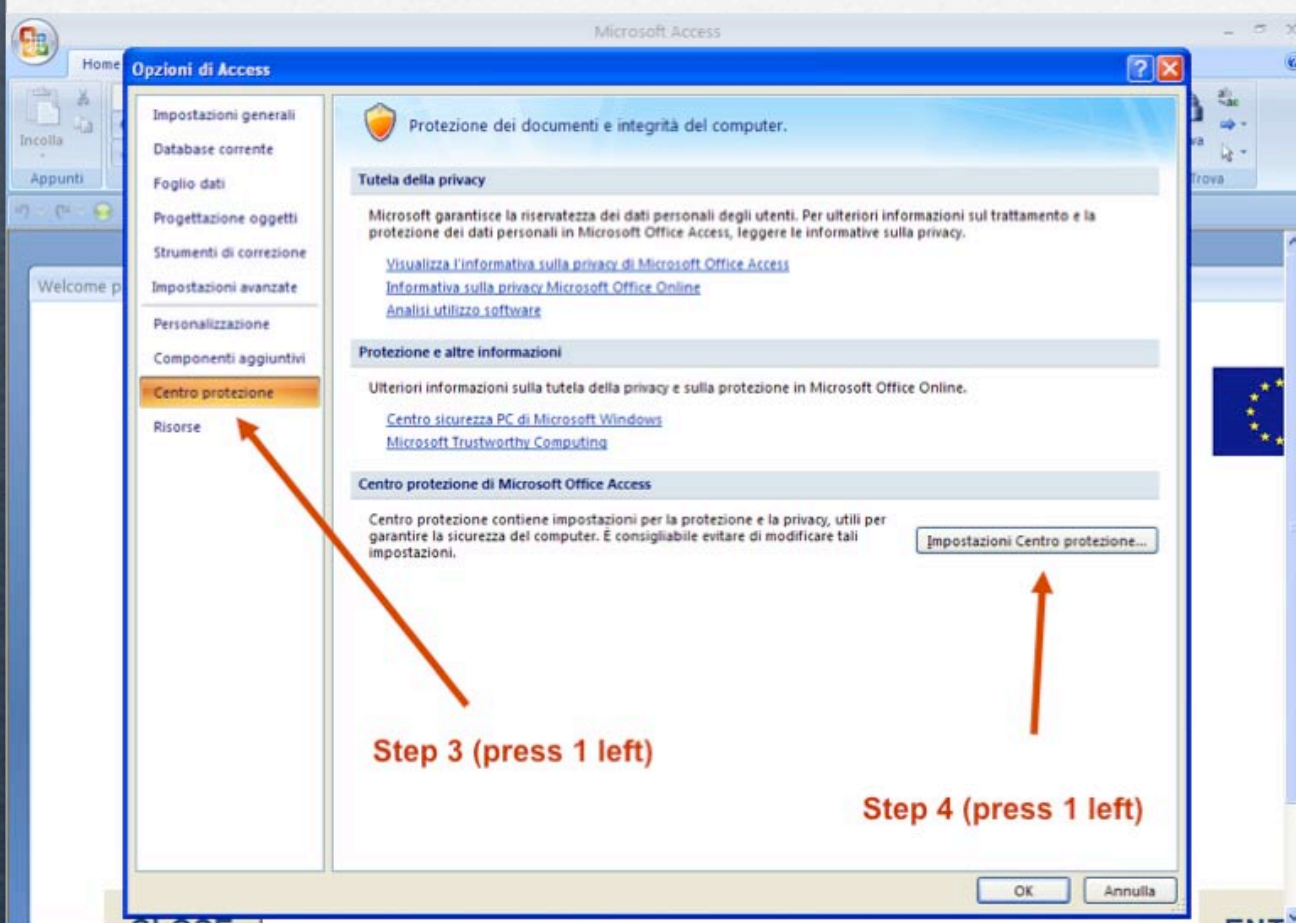
How to activate the macro VBA protection alert







## NATIONAL *IN SITU* LANDRACE INVENTORY



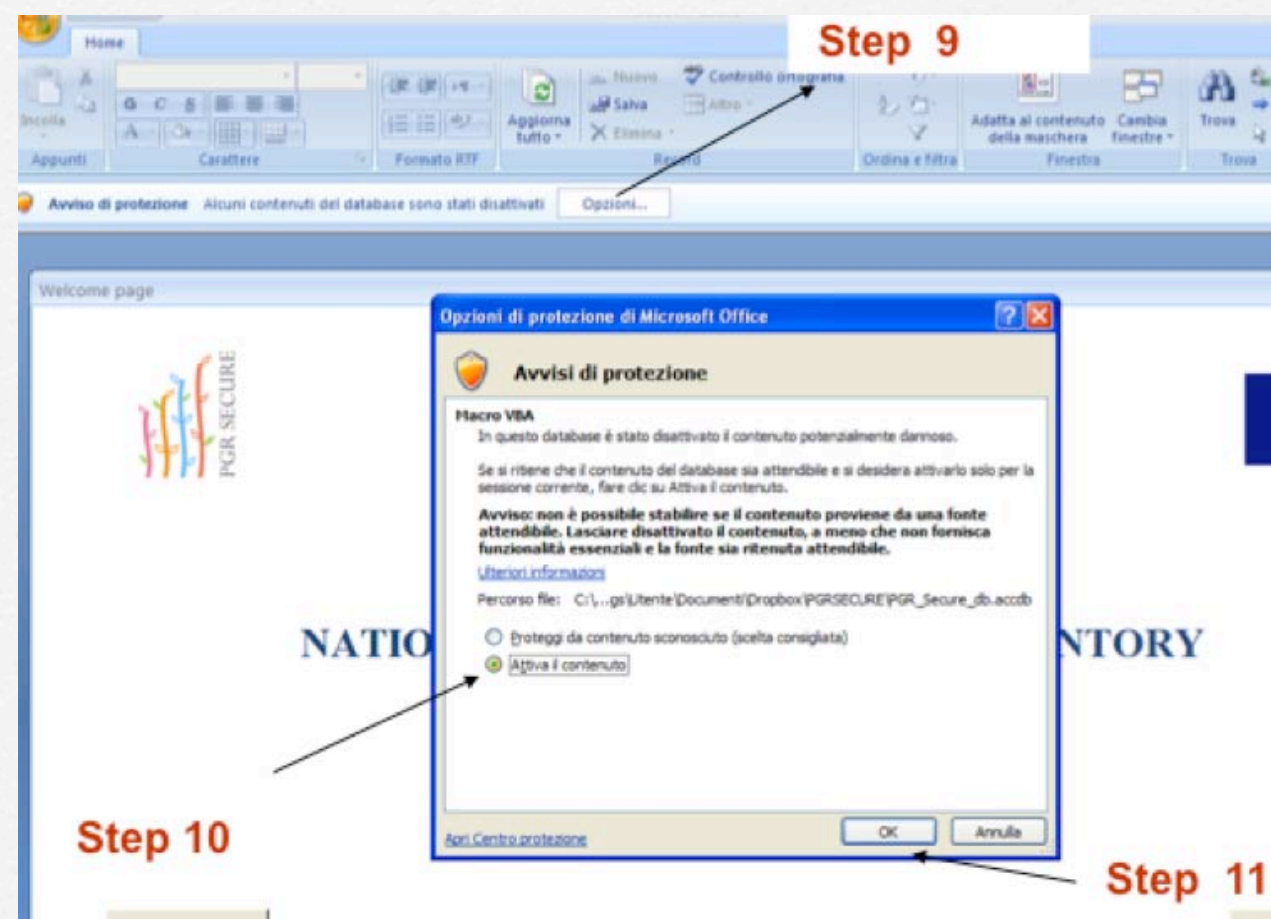




## NATIONAL *IN SITU* LANDRACE INVENTORY

**Step 7**  
**Close your Access file**

**Step 8**  
**Open again the Access file**







## NATIONAL *IN SITU* LANDRACE INVENTORY

### Contacts

Luca Pacícco: [paciccocoluca@gmail.com](mailto:paciccocoluca@gmail.com)

António Pepe: [antonio.g.pepe@gmail.com](mailto:antonio.g.pepe@gmail.com)

Valeria Negri: [vnegri@unipg.it](mailto:vnegri@unipg.it)

Renzo Torricelli: [torricel@unipg.it](mailto:torricel@unipg.it)